

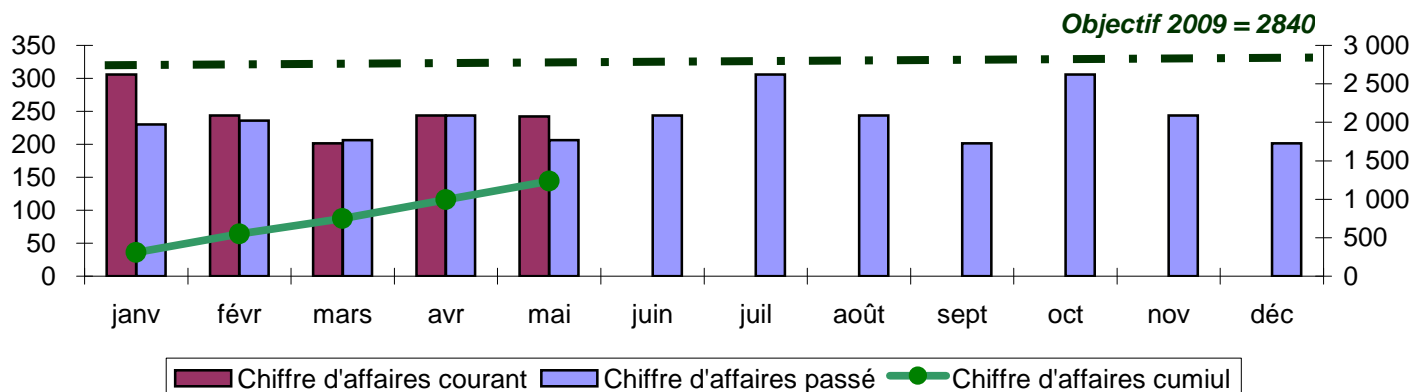


REPORTING MENSUEL ('000€)

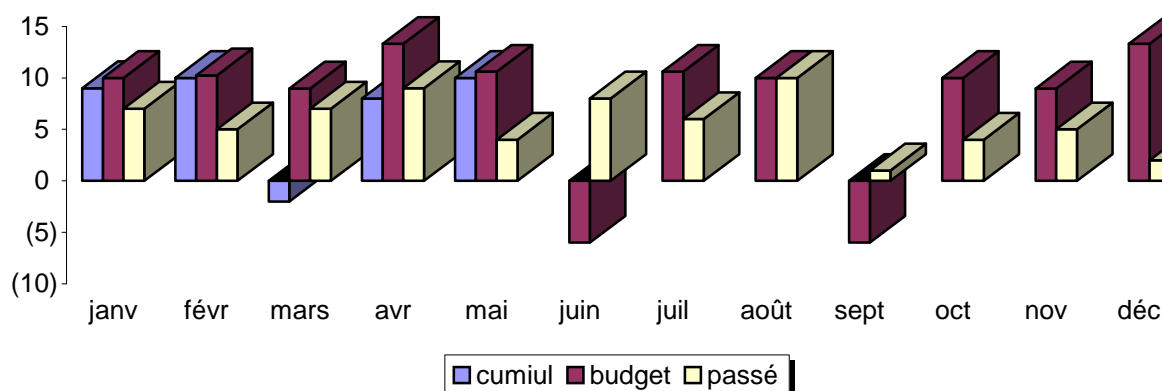
SOCIETE : ABC SPRL

PERIODE : mai-09

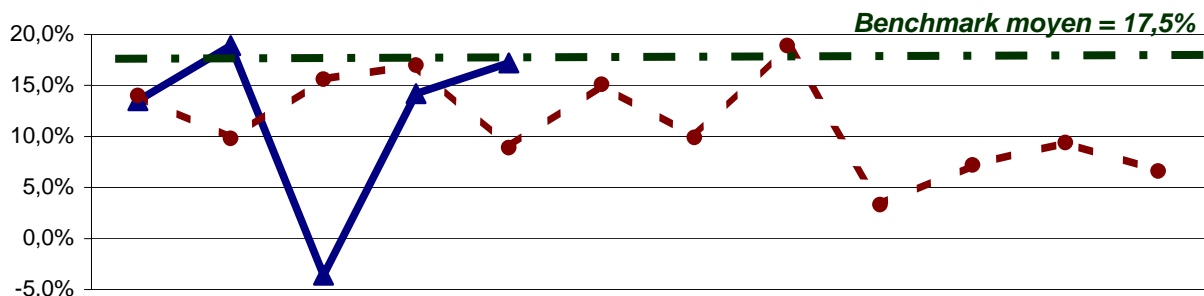
1. REVENUS



2. RESULTAT NET



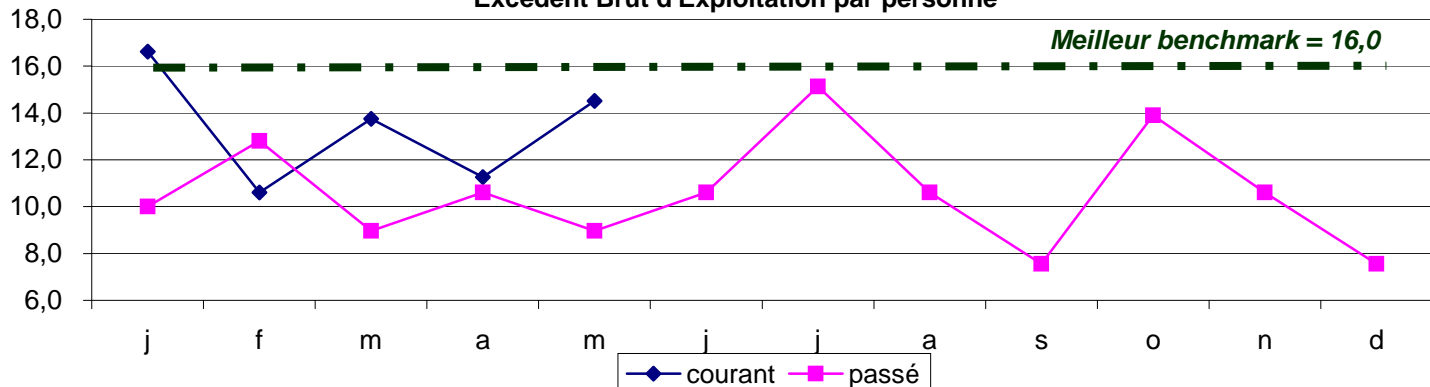
3. RENDEMENTS



	janv	févr	mars	avr	mai	juin	juil	août	sept	oct	nov	déc
Rdt Net d'Expl courant	13,5%	18,9%	-3,6%	14,2%	17,2%							
Rdt Net d'Expl passé	14,0%	9,8%	15,6%	17,0%	8,9%	15,1%	9,9%	18,9%	3,3%	7,2%	9,4%	6,6%

4. PRODUCTIVITE

Excédent Brut d'Exploitation par personne





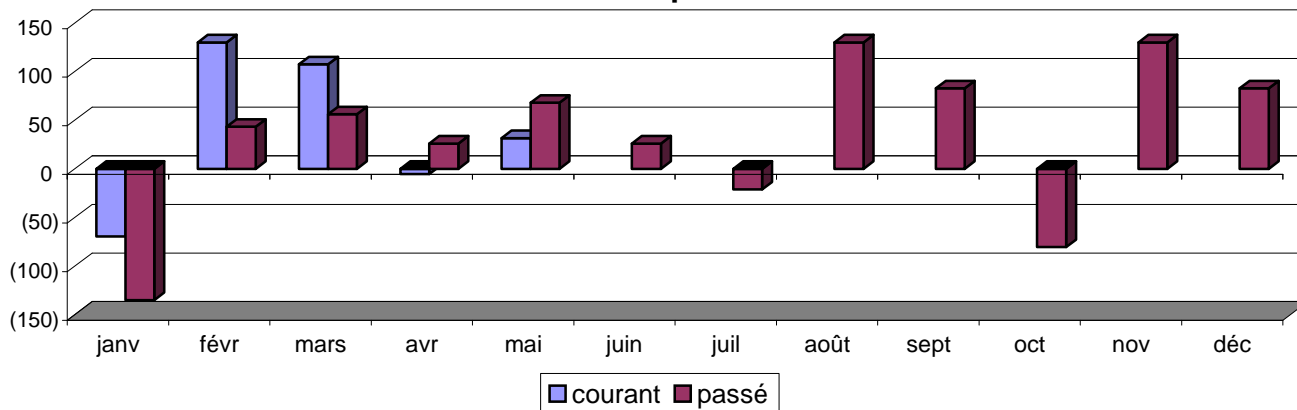
REPORTING MENSUEL ('000€)

SOCIETE : ABC SPRL

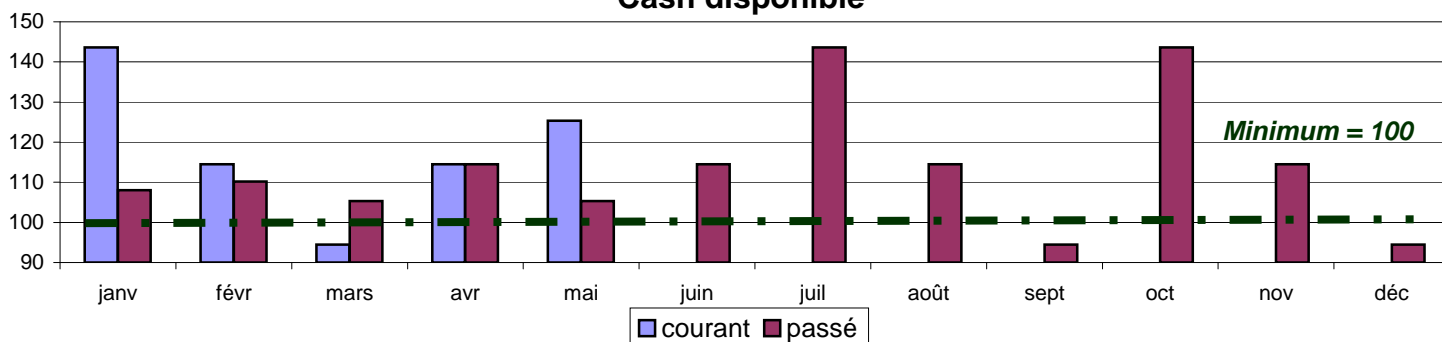
PERIODE : mai-09

5. TRESORERIE

Cash Flow Opérationnel

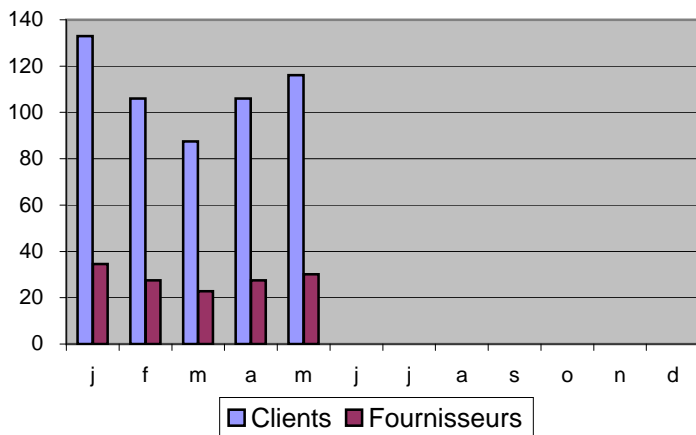


Cash disponible

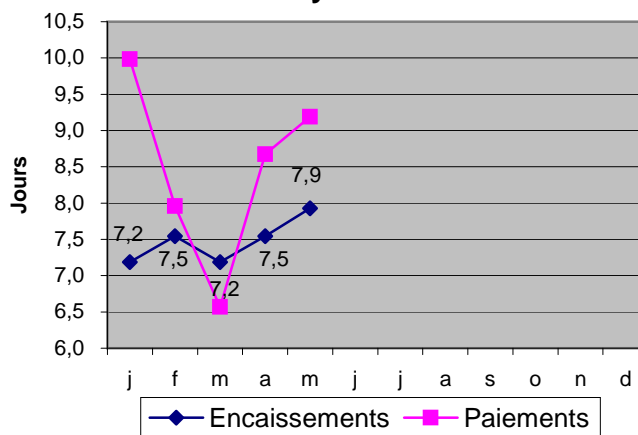


6. CLIENTS & FOURNISSEURS

Encours Actuel



Délai moyen actuel



7. STOCKS

Rotation des stocks

